

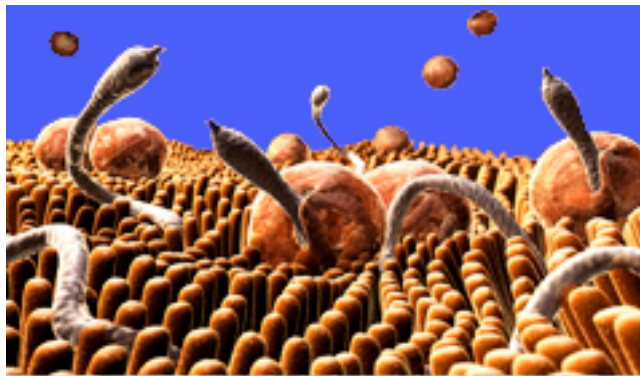


What do ADD/ADHD, Chronic Fatigue, Mood Swings, Neonatal Jaundice, Lupus, Atopic Dermatitis, MS and Fibromyalgia, have in Common?

Parasitic intestinal infection corresponds to a state of chronic intestinal toxicity.

The size and number of intestinal parasites that become activated is proportional to the toxic load to be disposed of in the bowel.

In order to achieve this disposal, the parasites work incessantly to reduce intestinal toxins by dispatching/transporting them to various parts of the body and its organs which, according to their particular function become "storage depots" or "repositories" for the toxic overload.

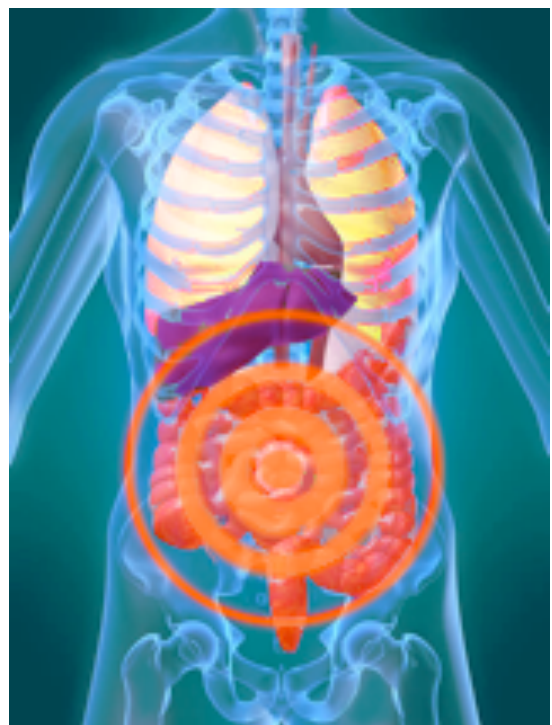


Parasites can infest any part of the human body, including: abdomen, blood, diaphragm, digestive tract, respiratory system, nervous system including the brain, joints, muscles, feet, hands, genitals, eyes, liver and skin.

The primary cause of parasitic intestinal infection...

is the presence in each one of us, since birth, of an inherited genetic predisposition dating back to seven family generations. This inherited genetic disposition is represented by an intestine which has a weakened ability to rid itself of toxins found in its milieu.

This weakened intestinal detoxification function is inherited through the paternal and/or maternal genealogy. Therefore we can expect a weaker intestinal function wherever parasitic pathology is evidenced in the family history. Consequently, the Healing Force of Nature in its effort to protect us is compelled to activate and multiply the intestinal parasite population, in order to rapidly dispatch and dump the accumulated toxins wherever a "repository" is available.



The Principal Clinical Signs of Intestinal Parasitic Infection:

- ADD/ADHD,
- Hyperactivity, Nervousness
- Leaky Gut, Leaky Brain
- Chronic Fatigue

- Panic Attacks, Anxiety

- Neonatal Jaundice
- Furry Tongue
- Irritable Bowel Syndrome
- Ulcerative Colitis

More Principal Clinical Signs of Intestinal Parasitic Infection

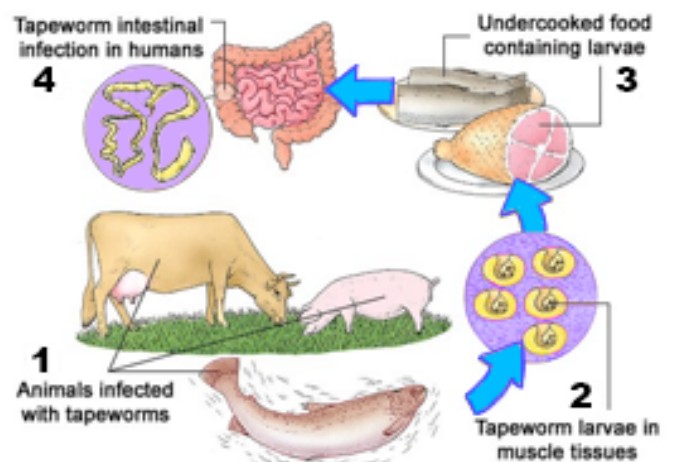
- Crohn's Disease
- Anal Itching
- Gastro-Oesophageal Reflux
- Halitosis
- Abdominal colic, spasms, gas, bloating, gurgling
- Dark Circles under the Eyes
- Constipation, Diarrhea or both
- Allergies of any kind and Food Intolerances
- Gastro-Duodenal Ulcer
- Ulcerative Colitis
- Fibromyalgia, Pain in Muscles and Joints
- Insomnia, Restlessness, Muscle Spasms, Nightmares
- Bruxism and/or Clenching
- Itchy throat with a Dry Cough
- Pharyngo-Laryngeal Reflux
- Catarrh/Phlegm of the Respiratory Airways Mucosa,
- Sinusitis/Rhinitis
- Laryngeal Spasms, Tightening of the Throat, Barking Cough
- Psoriasis, Alopecia
- Atopic Dermatitis, Eczema, Hives
- Fungal Skin Infections
- Systemic Lupus Erythematosus (SLE)
- Rheumatoid Arthritis
- Multiple Sclerosis
- Acne
- Conjunctivitis, Chalazion (Stye)
- Sudden Weight Loss
- Anemia
- Colon Cancer
- Inflammation
- Apathy, Depression, Lack of Concentration, Memory Lapses, Foggy Brain, (Due to continuous release of toxins and causing malabsorption of proteins, carbohydrates, fats, Vit A, Vit B12, Vit B6, Vit D, Magnesium, Iron, Zinc)
- Immune Dysfunction:
- (Parasites suppress the Immune System through the decrease of secretion of Immunoglobulin A. Their continued presence stimulates the immune system which in the long run can deplete its vital response and allow the attack of viruses, fungi and bacteria).

All these disease signs and symptoms are a natural expression of the body's attempts to eliminate the overload of intestinal toxins due to parasites. Any treatment that focuses solely on the symptoms will always provoke a worsening of the underlying state of a gut suffering a parasitic infection. Continuing to treat only the symptoms will inevitably, over time, cause the disease to progress from an outer expression towards a deeper "internal" and hence more serious expression.

Parasitic intestinal infection is a very common health problem in adults but especially in children.

Children are constantly putting their hands in contact with their mouth and in their nose, where under their nails, is a breeding ground for eggs of parasites that can live up to two weeks.

Contamination of parasites is also through raw meat, raw pork and raw fish, pets, tap water, raw vegetables and fruit not washed correctly, walking barefoot and sexual contact with an infected partner.



The therapy is carried out by acting on two fronts: Individualised Nutritional Advice, a Miasmatic-Constitutional Remedy, Homotoxicological Detoxification, Homotoxicological Parasite Remedy, Herbal Remedy when needed and a specific Probiotic, to "restore the intestinal milieu/terrain" back to health.

REFERENCES

<http://www.aafp.org/afp/2004/0301/p1161.html>
http://en.wikipedia.org/wiki/Intestinal_parasite
<http://umm.edu/health/medical/altmed/condition/intestinal-parasites>
<http://www.mindbodygreen.com/0-11321/10-signs-you-may-have-a-parasite.html>
<http://www.humanillnesses.com/Infectious-Diseases-He-My/Intestinal-Parasites.html>
<http://www.ms-uk.org/endoparasites>
<http://onlinelibrary.wiley.com/doi/10.1002/ana.21067/abstract;jsessionid=D35D4AE818C6EC3EBA0D1F11BF448238.f04t04?deniedAccessCustomisedMessage=&userIsAuthenticated=false>
<http://onlinelibrary.wiley.com/doi/10.1002/ana.21438/abstract?deniedAccessCustomisedMessage=&userIsAuthenticated=false>
<http://healthwyze.org/index.php/component/content/article/243-eliminating-the-parasites-that-you-almost-certainly-have-and-curing-lupus.html>
<http://www.foxnews.com/health/2010/10/04/parasitic-worms-cure-autoimmune-diseases/>
<http://www.yourmedicaldetective.com/public/96.cfm>

<http://www.medhelp.org/posts/Fibromyalgia/How-many-of-you-have-been-tested-for-parasites/show/658619>
<http://www.ncbi.nlm.nih.gov/pubmed/24417507>
http://www.academia.edu/10105839/Association_of_atopy_asthma_allergic_rhinoconjunctivitis_atopic_dermatitis_and_intestinal_helminth_infections_in_Cuban_children_Associated_infections_in_Cuban_children
<http://onlinelibrary.wiley.com/doi/10.1111/j.1365-3156.2007.01988.x/full>
<http://www.sciencedirect.com/science/article/pii/S0091674903801264>
<http://allonhealth.com/intestinal-parasites/intestinal-parasites-adhd.htm>
<http://www.fasebj.org/content/14/12/1848.short>
<http://www.ncbi.nlm.nih.gov/pmc/articles/PMC1435589/>
<http://www.canceractive.com/cancer-active-page-link.aspx?n=214>

Claudio Capozza MBBS (Italy) N.D. & Patrizia Gentile N.D.
Dip. Nat., Dip. Nut., Dip. Kine., Dip.Med.Herb.
Homotoxicology, Orthomolecular Medicine
Members ATMS N° 24198 - 24199
Members of ASBRM N° 744 - 745,
Members of ISOHH, Members of IAH



www.lotusdental.com.au www.lotushealth.com.au

02 9953 5153 admin@lotusdental.com.au Suite 102-103, 40 Yeo Street Neutral Bay NSW 2089